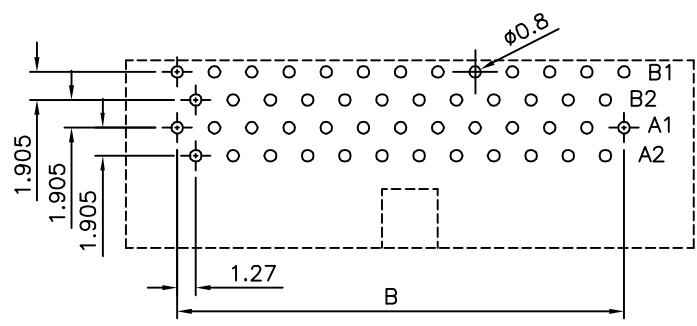
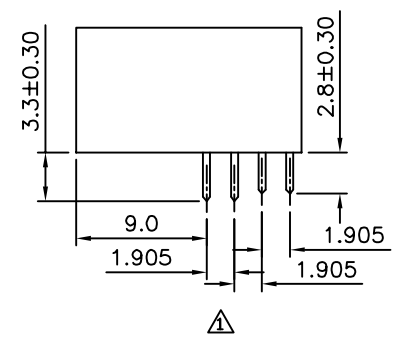
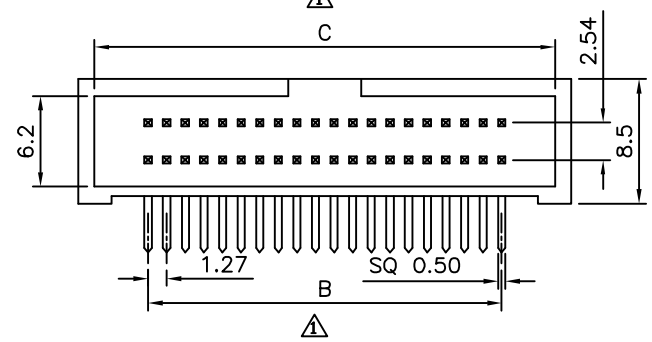
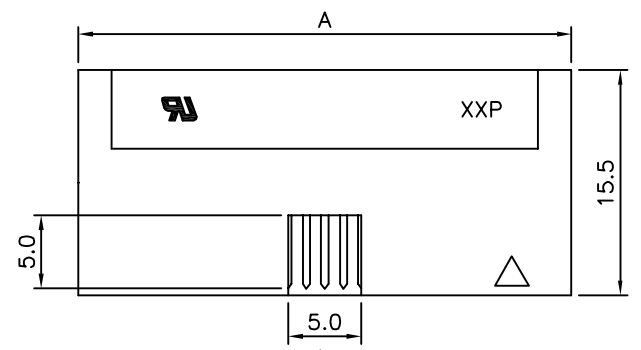


Recommended P.C.B. Layout (Top View)  
(20,32,40,52,60,68,80,100 Pin)



Recommended P.C.B. Layout (Top View)  
(26,34,50 Pin)

**△ SPECIFICATION**  
 Current Rating: 1 Amp  
 Withstand Voltage: 500V AC For 1 Minute  
 Contact Resistance: 20 Milliohms Max. At 100mA DC  
 Insulation Resistance: 1000 Megaohms Min. At 250V DC  
 Operation Temperature: -55°C ~ +105°C  
 Contact: Brass, Gold Flash On Contact Area, Tin Plated On Solder Tails, Over Nickel  
 Insulator: PBT+G.F. (UL94V-0), Black  
 RoHS Compliant



Pin	A	B	C
20	20.95	11.43	18.75
26	24.76	15.24	22.56
32	28.57	19.05	26.37
34	29.84	20.32	27.64
40	33.65	24.13	31.45
50	40.00	30.48	37.80
52	41.27	31.75	39.07
60	46.35	36.83	44.15
68	51.43	41.91	49.23
80	59.05	49.53	56.85
100	71.75	62.23	69.55

**4UCON** 元化興業股份有限公司  
4UCON TECHNOLOGY INC.

DRAWING No. 06584  
 APPROVED BY EMILY  
 CHECKED BY HZF  
 DRAWING BY CYP  
 SCALE NONE REV. A1  
 UNLESS OTHERWISE SPECIFIED TOLERANCES ARE:  
 △ X. ±0.5  
 .X ±0.25  
 .XX ±0.15  
 UNIT mm

NO.	REV.	REVISIONS	CHK	DATE
△ A1		Modify Data	HZF	10/24/2015
△ A0		NEW RELEASE		