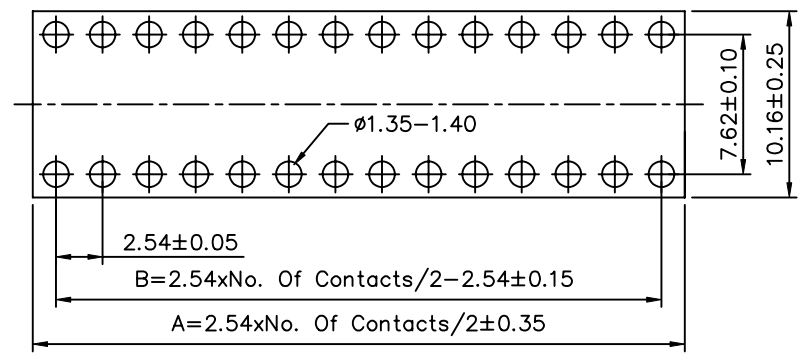
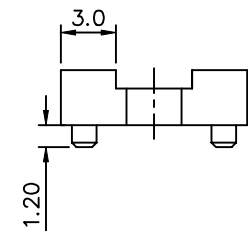
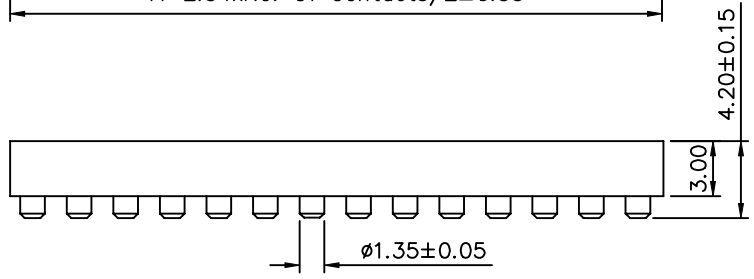
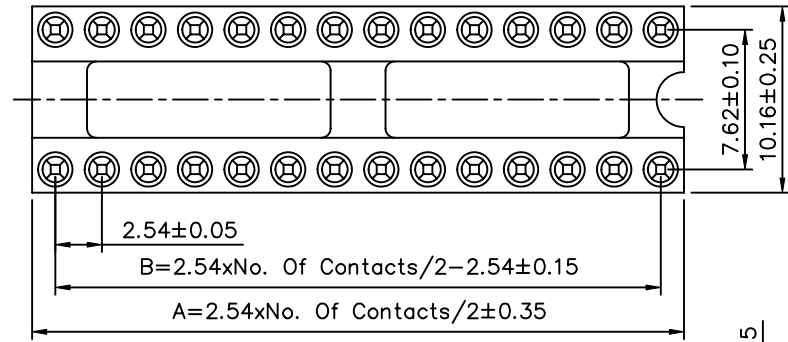


**SPECIFICATION**

Current Rating: 3 Amp/Contact Max.  
 Contact Resistance: 4 Milliohms Max./Contact  
 Insulation Resistance: 1000 Megaohms Min. At 100V  
 Operating Voltage: 60V AC/DC  
 Average Insertion Force With Steel Pin Of  $\phi 0.43\text{mm}$ : <250g  
 Average Withdrawal Force With Steel Pin Of  $\phi 0.43\text{mm}$ : >50g  
 Mechanical Life Cycle: 200 Min.  
 Operating Temperature: Gold Plated:  $-55^{\circ}\text{C}$  To  $+105^{\circ}\text{C}$   
 Tin Plated:  $-40^{\circ}\text{C}$  To  $+105^{\circ}\text{C}$   
 Soldering Temperature:  $+260^{\circ}\text{C}$ , 10s Max.  
 Pin(Outer Sleeve): Brass, Machined CuZn38Pb2  
 Clip(Contact 4 Finger): Beryllium Copper, Heat Treated  
 Plating(Outer Sleeve): Tin Plated:  $2\mu\text{m}/80\text{u}''$  Ni,  $5\mu\text{m}/200\text{u}''$  Sn  
 Gold Plated:  $2\mu\text{m}/80\text{u}''$  Ni, Full Gold  
 Plating(Contact):  $2\mu\text{m}/80\text{u}''$  Ni, Gold Or Tin Plated  
 Insulator(Black): PBT Glass Filled Thermoplastic Polyester  
 UL 94V-0 Rated  
 RoHS Compliant



PCB Layout

No. Of Contacts	A	B
06	7.62	5.08
08	10.16	7.62
14	17.78	15.24
16	20.32	17.78
18	22.86	20.32
20	25.40	22.86
24	30.48	27.94
28	35.56	33.02

**4UCON** 元化興業股份有限公司  
 4UCON TECHNOLOGY INC.

DRAWING No.		APPROVED BY		UNLESS OTHERWISE SPECIFIED TOLERANCES ARE X. ±0.35 .X ±0.20 .XX ±0.15 .XXX ±0.05 ANG. ±5°	
10177		MEI			
		CHECKED BY	BECKY		
		DRAWING BY	TCF		
SCALE	NONE	REV.	A0	UNIT	mm

NO.	REV.	REVISIONS	CHK	DATE
△ A0		NEW RELEASE	BECKY	07/13/2005