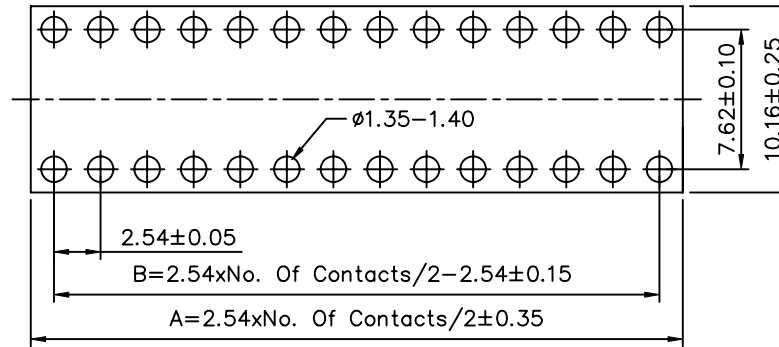
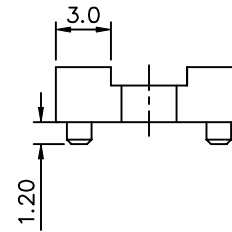
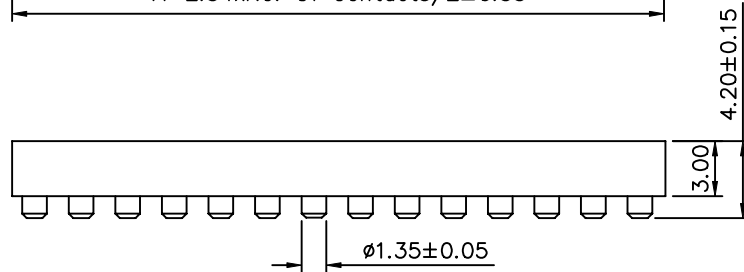
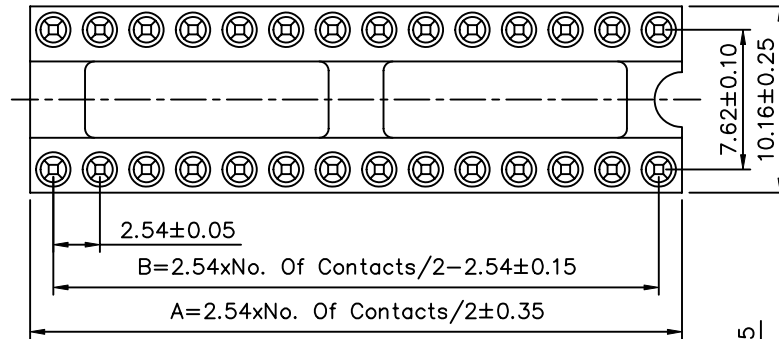


**SPECIFICATION**

Current Rating: 3 Amp/Contact Max.  
 Contact Resistance: 4 Milliohms Max./Contact  
 Insulation Resistance: 1000 Megaohms Min. At 100V  
 Operating Voltage: 60V AC/DC  
 Average Insertion Force With Steel Pin Of  $\phi 0.43\text{mm}$ : <250g  
 Average Withdrawal Force With Steel Pin Of  $\phi 0.43\text{mm}$ : >50g  
 Mechanical Life Cycle: 200 Min.  
 Operating Temperature: Gold Plated:  $-55^{\circ}\text{C}$  To  $+105^{\circ}\text{C}$   
 Tin Plated:  $-40^{\circ}\text{C}$  To  $+105^{\circ}\text{C}$   
 Soldering Temperature:  $+260^{\circ}\text{C}$ , 10s Max.  
 Pin(Outer Sleeve): Brass, Machined CuZn38Pb2  
 Clip(Contact 4 Finger): Beryllium Copper, Heat Treated  
 Plating(Outer Sleeve): Tin Plated:  $2\mu\text{m}/80\text{u}''$  Ni,  $5\mu\text{m}/200\text{u}''$  Sn  
 Gold Plated:  $2\mu\text{m}/80\text{u}''$  Ni, Full Gold  
 Plating(Contact):  $2\mu\text{m}/80\text{u}''$  Ni, Gold Or Tin Plated  
 Insulator(Black): PBT Glass Filled Thermoplastic Polyester  
 UL 94V-0 Rated  
 RoHS Compliant



PCB Layout

| No. Of Contacts | A     | B     |
|-----------------|-------|-------|
| 06              | 7.62  | 5.08  |
| 08              | 10.16 | 7.62  |
| 14              | 17.78 | 15.24 |
| 16              | 20.32 | 17.78 |
| 18              | 22.86 | 20.32 |
| 20              | 25.40 | 22.86 |
| 24              | 30.48 | 27.94 |
| 28              | 35.56 | 33.02 |

**4UCON** 元化興業股份有限公司  
 4UCON TECHNOLOGY INC.

DRAWING No. 10181

APPROVED BY MEI  
 CHECKED BY BECKY  
 DRAWING BY TCF

UNLESS OTHERWISE SPECIFIED TOLERANCES ARE  
 X. ±0.35  
 .X ±0.20  
 .XX ±0.15  
 .XXX ±0.05  
 ANG. ±5°

SCALE NONE

REV. A0

NO. REV. A0 NEW RELEASE REVISIONS BECKY 07/13/2005  
 CHK DATE